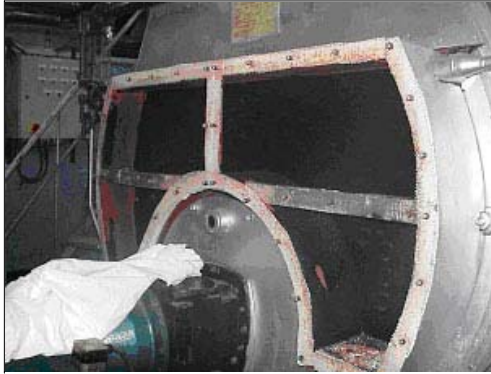
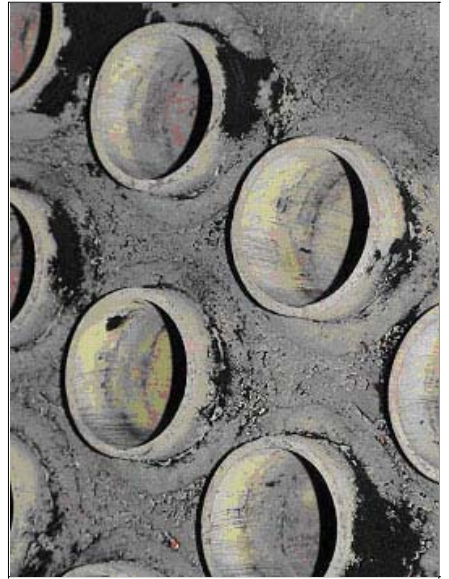
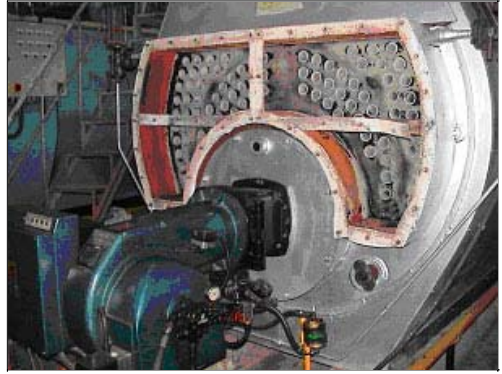


**Before Installation**



**After 48 Hours Operation**



## **Tube Condition Before Installation**

## **Tube Condition After Installation**

From the pictures above it is possible to see the difference in Boiler conditions and the effect that occur when enhanced fuel quality, and balanced O<sub>2</sub> levels are supplied to the Boiler as the internal surface areas of the pipes are perfectly clean allowing for maximum heat transfer during boiler operation.